

VS 2

Spannschuhunterteil auf Klebplatte C3

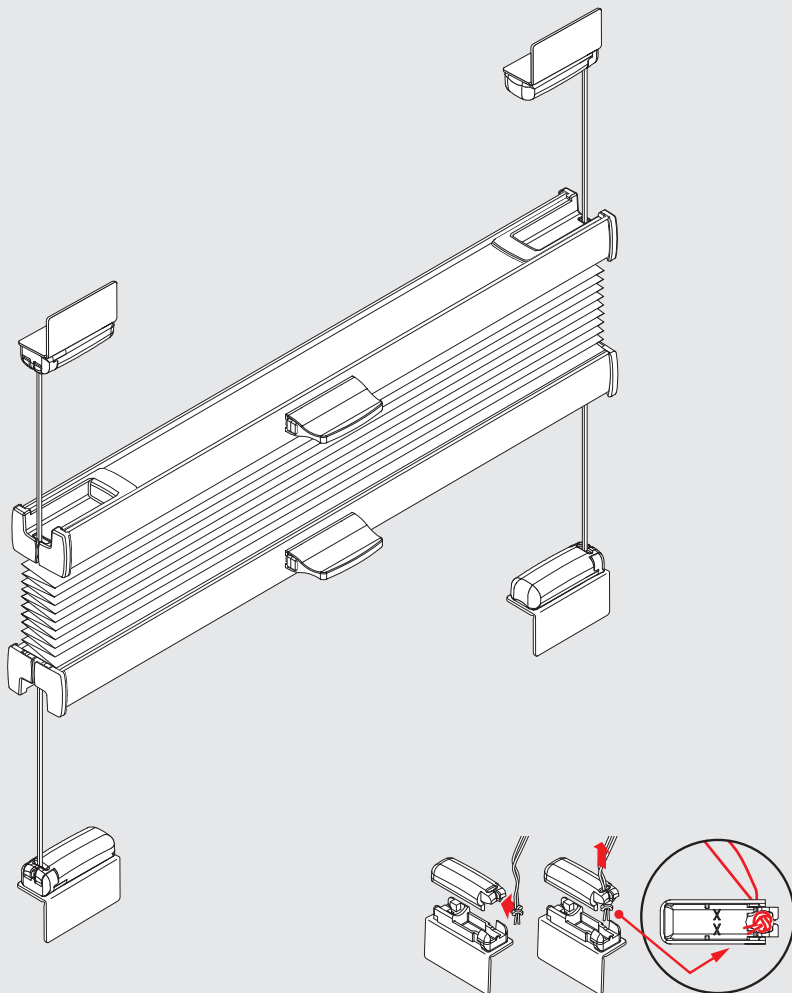
Tensioning shoe bottom on sticky pad

Dolna część buta zaciskowego do klejenia

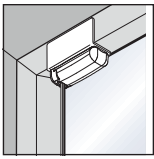
Башмачок-крепление, нижняя часть для приклеивания



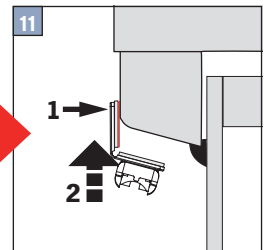
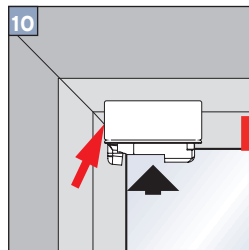
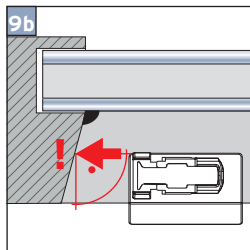
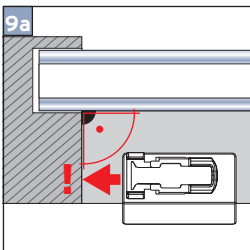
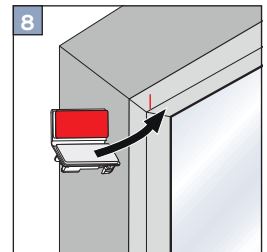
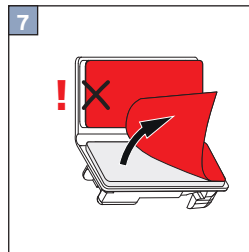
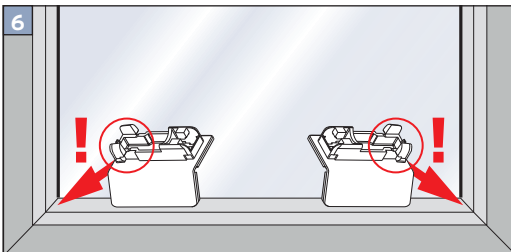
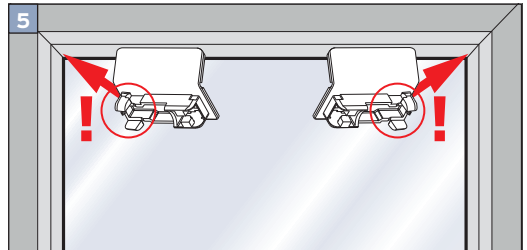
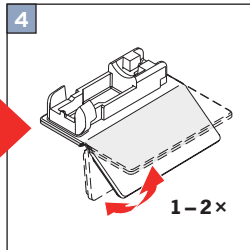
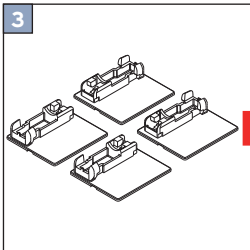
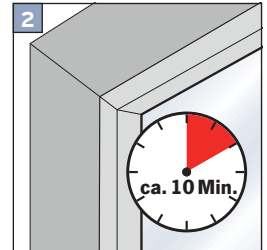
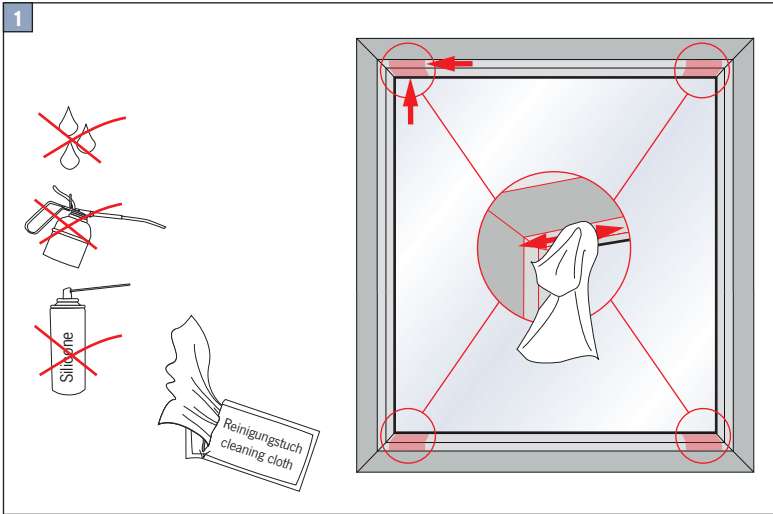
max.
2 m²

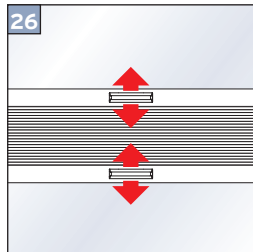
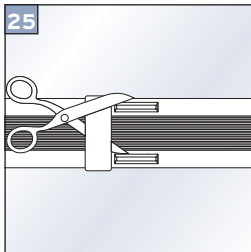
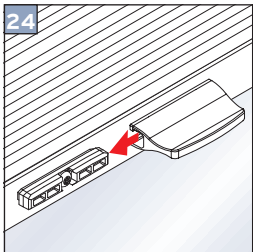
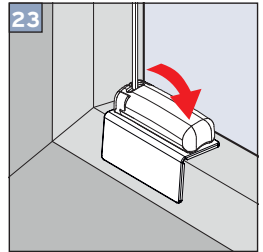
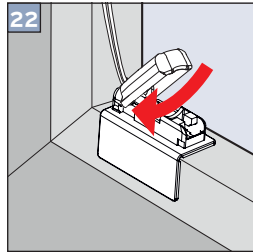
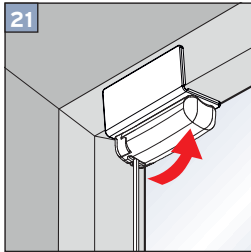
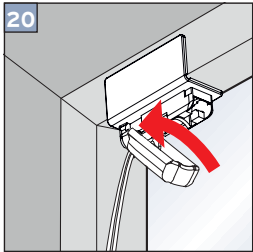
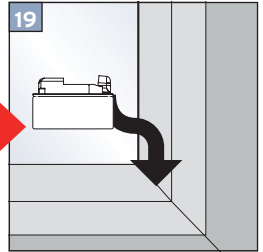
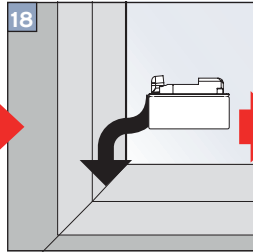
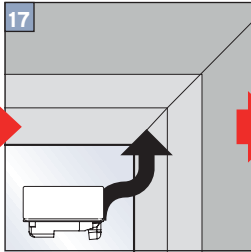
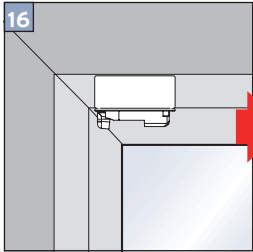
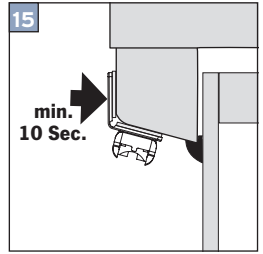
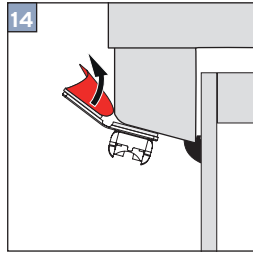
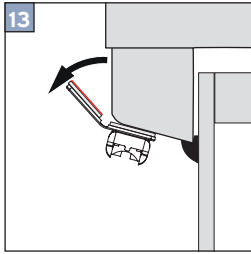
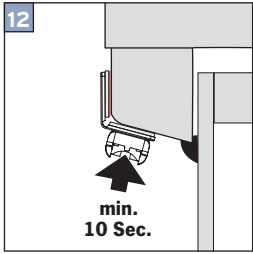


Wichtig! Bitte mit der Pflegeanleitung aufbewahren! • Important! Please keep together with care instructions!
Ważne! Proszę przechowywać z instrukcją pielęgnacji! • Внимание! Хранить вместе с инструкцией по эксплуатации!

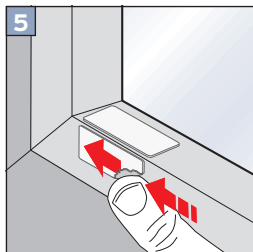
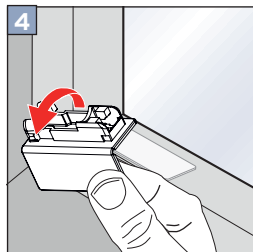
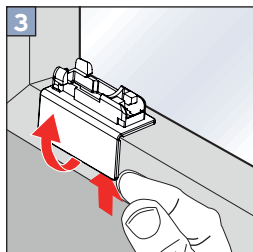
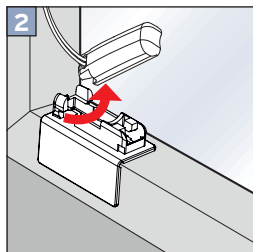
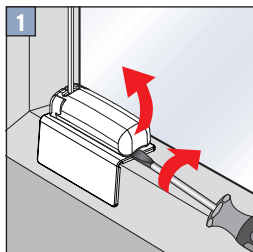


Falzmontage
Top fixing
Montaż w świetle szyby
Монтаж в проем





Demontage • Disassembly • Demontaž • Демонтаж



Option • Опција • Вариант

